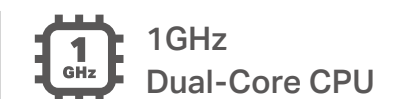
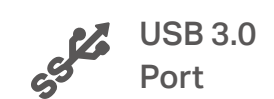
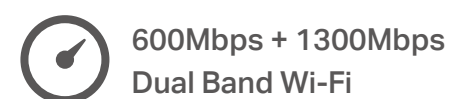




# AC1900 High Power Wireless Dual Band Gigabit Router

Enjoy Everything Online  
with Powerful Wi-Fi

Archer C1900



# Highlights

## Build a Powerful Network

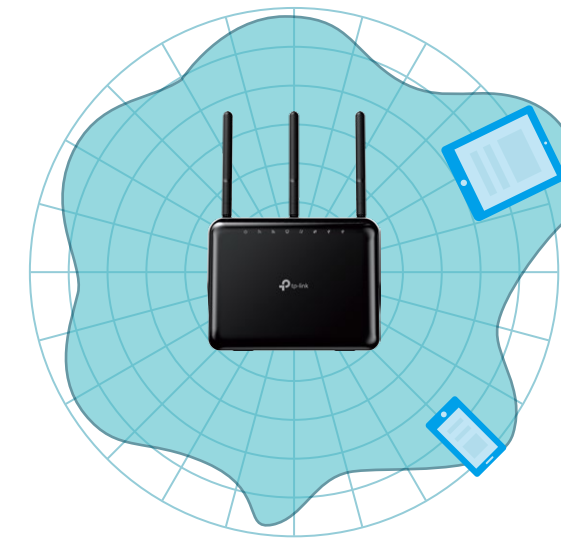
Thanks to three high-performance antennas and 900mW power amplifiers, Archer C1900 sends strengthened network signal through walls and other physical obstacles, so you can enjoy reliable Wi-Fi across your home.

- 2.4GHz 600Mbps
- 5GHz 1300Mbps

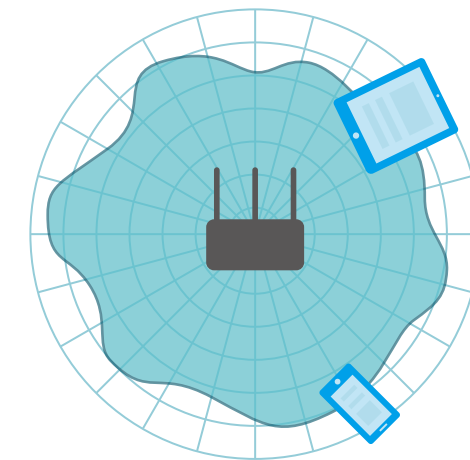


## Beamforming for Better Coverage

Beamforming technology dramatically improves the router's coverage by locating wireless devices to form stronger, more reliable connections, even as mobile devices move from room to room.



Archer C1900

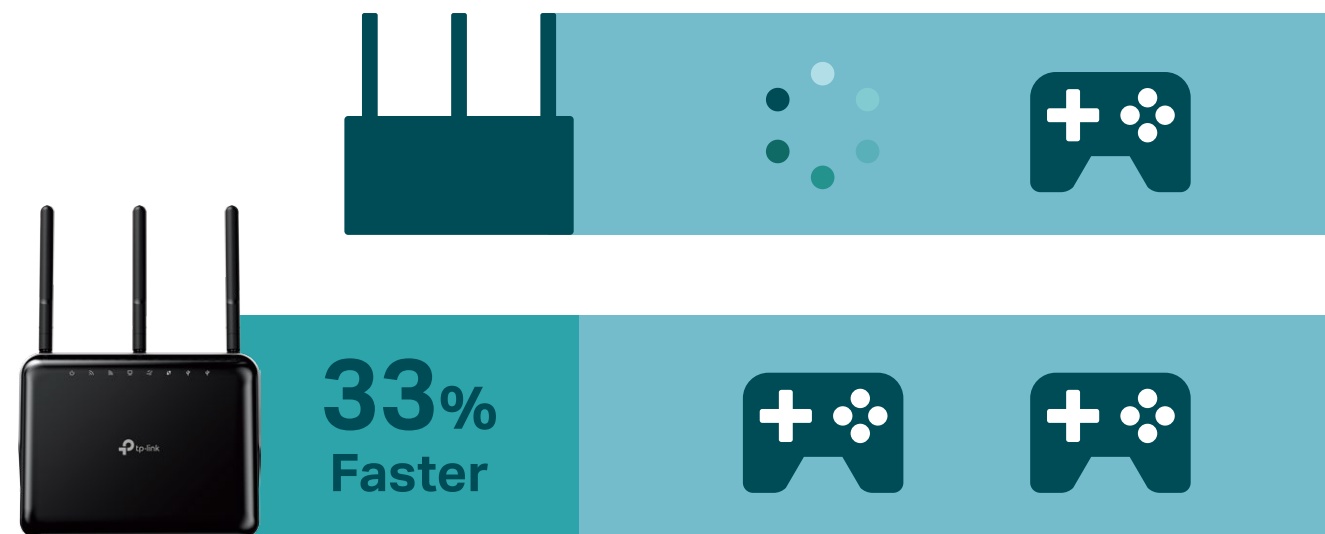


Regular Router

# Highlights

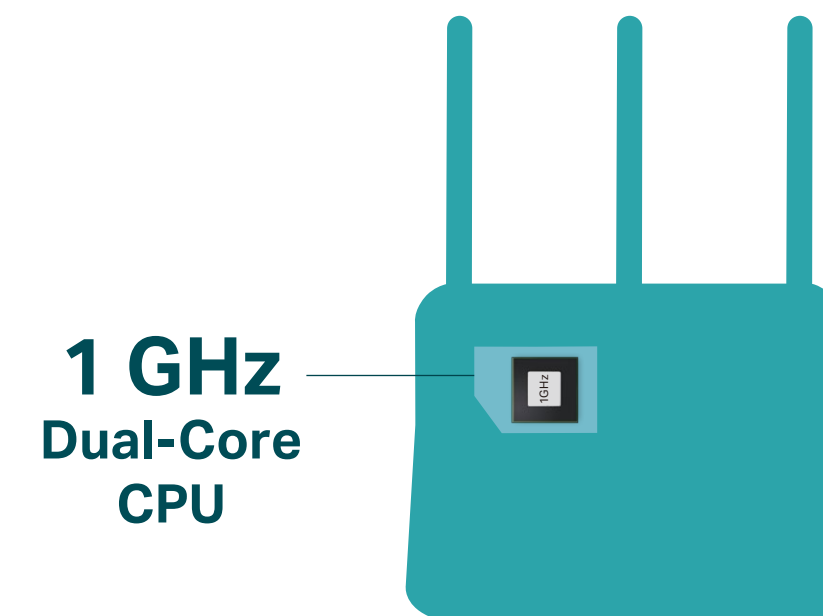
## TurboQAM™ (256QAM) Technology

Boosts your wireless network speed by up to 33% when compared to standard single-stream routers for excellent performance over 2.4GHz.



## 1GHz Dual-Core CPU

Superior processing ability keeps connections, data transfers and storage tasks fast and stable for all your connected devices.

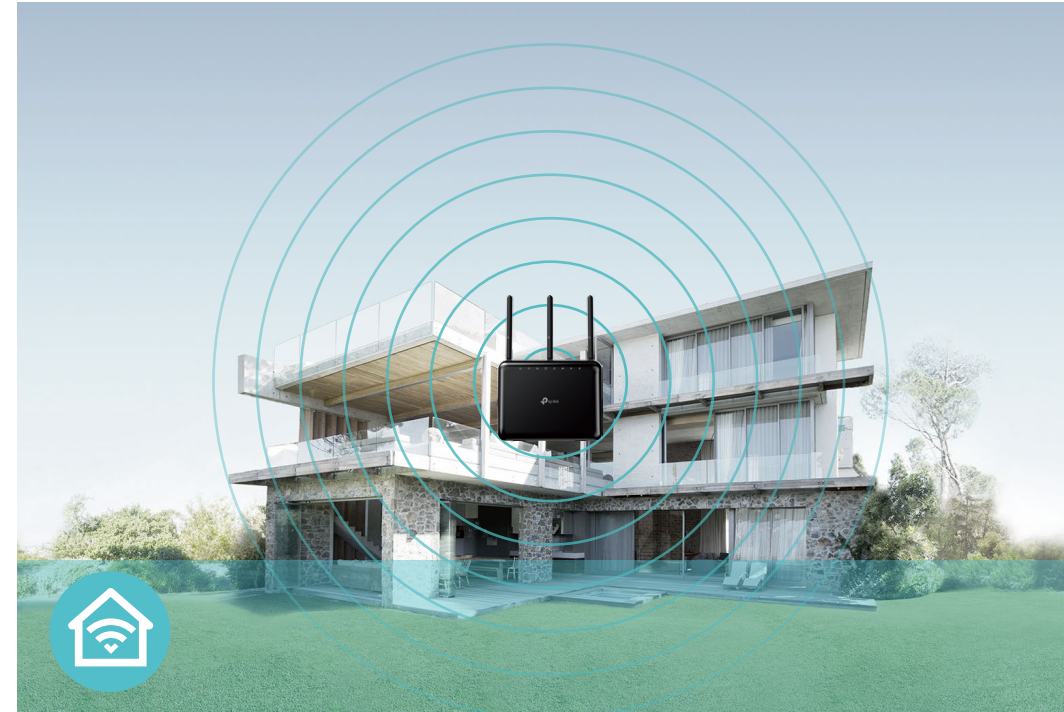


# Features



## Speed

- **Ultimate Wireless Speed** – Combined wireless speeds up to 600Mbps (over 2.4GHz) and 1300Mbps (over 5GHz)
- **TurboQAM™ Technology** – Use TurboQAM™ (256QAM) Technology modulation scheme for higher data throughput, boosting wireless speeds up to 33%
- **Support 802.11 ac** – Provides a data transfer rate 3 times faster than 802.11n for each stream
- **Dual-core CPU** – 1GHz dual-core CPU and 2 co-processors make multi-tasking easy and boost data transfer rate



## Wi-Fi Range

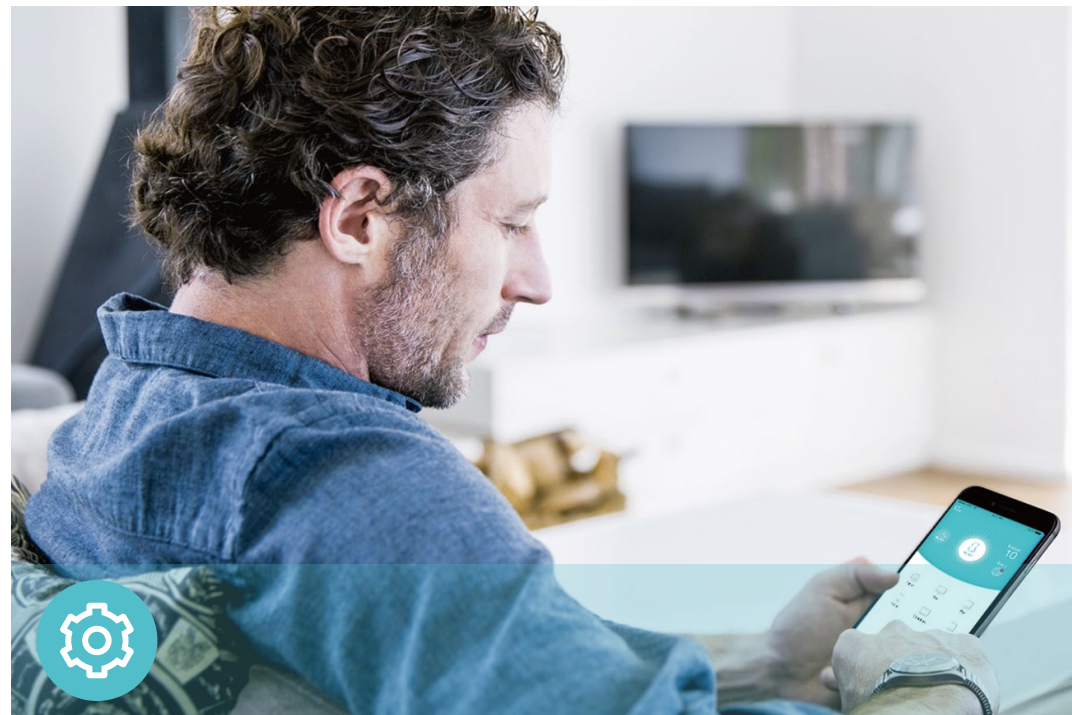
- **Ultimate Range Wi-Fi** – 3 dual band high-performance antennas with a high-powered amplifier ensure the widespread Wi-Fi coverage and a stable connection
- **Wi-Fi with Beamforming** – Beamforming technology locates the connected devices and further improves the Archer C1900's range and the signal strength to each mobile device, delivering a more reliable and efficient wireless connection



## Reliability

- **Simultaneous Dual Band** – Separate Wi-Fi bands enable more devices to connect to your network without a drop in performance
- **Easy Bandwidth Management** – Advanced QoS makes it easier for you to manage the bandwidth of connected devices

# Features



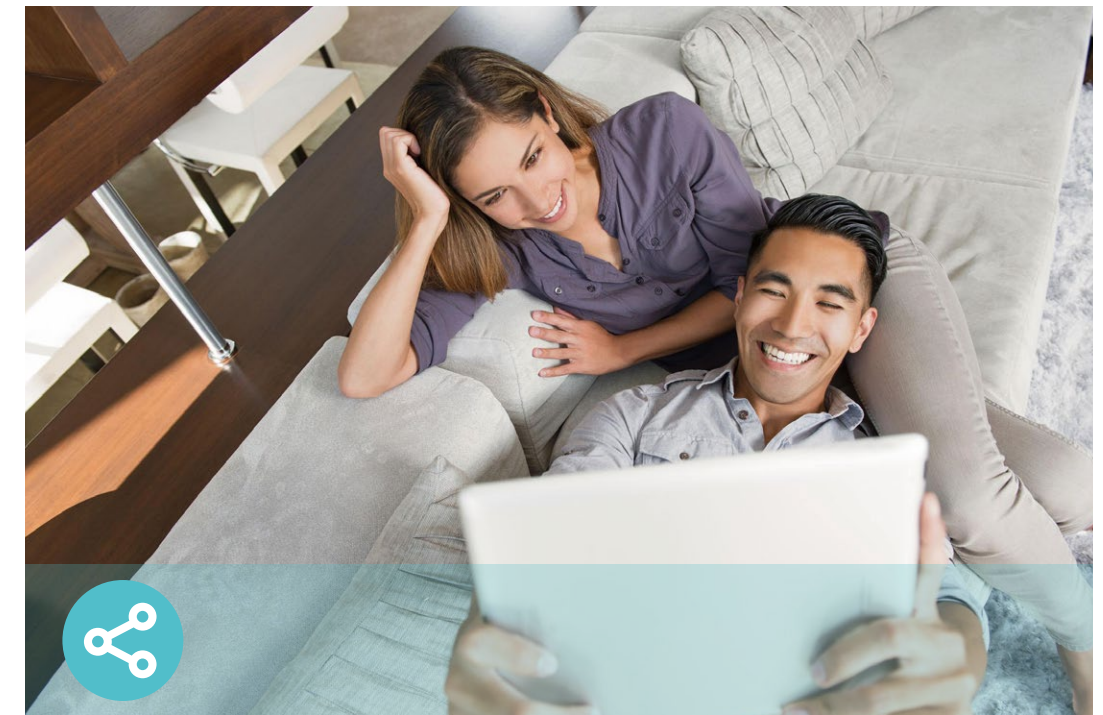
## Ease of Use

- Intuitive Web UI – Ensures quick and simple Installation without hassle
- Fast Encryption – One-touch WPA wireless security encryption with the WPS button
- Wi-Fi On/Off – Turn on/off wireless radio as needed using the Wi-Fi On/Off button
- Power On/Off – Conveniently power on or off your router as required
- Hassle-free Management with Tether App – Network management is made easy with the TP-Link Tether App, available on any Android and iOS device
- Online Upgrade – Keeps you informed of the latest firmware updates, ensuring your router stays at its best



## Security

- Guest Network – Keep your main network secure by creating a separate network for friends and visitors
- Access Control – Establish a whitelist or blacklist to allow or restrict certain devices to access the internet
- Parental Controls – Restrict internet access time and contents for children devices
- VPN Server – PPTP VPN and OpenVPN are supported, making it easy to set up a secure connection between your private network and the Internet
- Encryptions for Secure Network – WPA-PSK and WPA2-PSK encryptions provide active protection against security threats



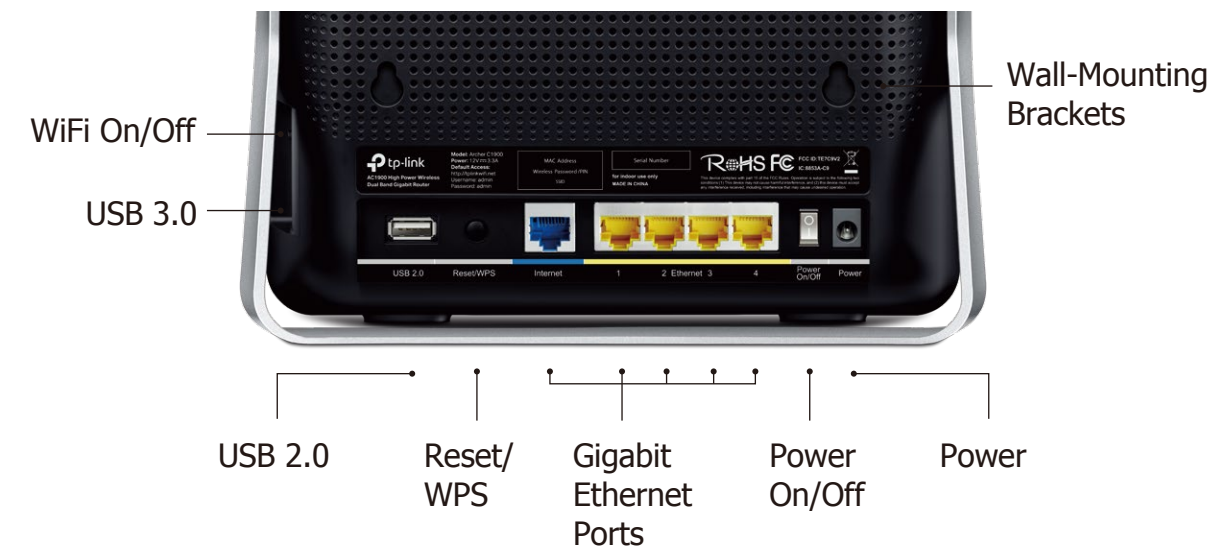
## Easy Sharing

- Dual USB Ports for Fast Sharing – With one ultra-fast USB 3.0 port and one USB 2.0 port, you can access and share a printer as well as your files and media locally. Through the router's FTP server, you can also access your files and media from network devices remotely
- 10x Faster Transfer Speed – The USB 3.0 port provides up to 10x faster USB hard drive access than previous generation USB 2.0 connections
- Built-in Print Server – Allows wireless printing from multiple computers (works in conjunction with a USB printer)
- Built-in Media Server – Allows you to play music, watch videos and view photos from any device on your network
- Built-in Time Machine – Regularly backs up all the files on your Macbook to a USB storage device connected to the router

# Specifications

## Hardware

- Ethernet Ports: 4 10/100/1000Mbps LAN Ports, 1 10/100/1000Mbps WAN Port
- USB Ports: 1 USB 3.0 Port, 1 USB 2.0 Port
- Buttons: WiFi On/Off Button, Power On/Off Button, Reset/WPS Button
- Antennas: 3 Dual Band Antennas
- External Power Supply: 12VDC/3.3A
- Dimensions (W x D x H): 8.7 X 3.4 X 6.6 in. (221 X 86 X 168.5mm)



## Wireless

- Wireless Standards: IEEE 802.11ac/n/a 5GHz, IEEE 802.11b/g/n 2.4GHz
- Frequency: 2.4GHz and 5GHz
- Signal Rate: 1300Mbps at 5GHz, 600Mbps at 2.4GHz
- Transmit Power: FCC: <30dBm(2.4GHz & 5GHz)
- Reception Sensitivity:
  - 5GHz:
    - 11a 6Mbps: -94dBm, 11a 54Mbps: -76dBm
    - 11ac HT20: -68dBm, 11ac HT40: -64dBm, 11ac HT80: -60dBm
  - 2.4GHz:
    - 11g 54M: -77dBm, 11n HT20: -73dBm, 11n HT40: -71dBm
- Wireless Function: Enable/Disable Wireless Radio, WDS Bridge, WMM, Wireless Statistics
- Wireless Security: 64/128-bit WEP, WPA/WPA2, WPA-PSK/WPA-PSK2 encryptions, WPS

# Specifications

## Software

- Quality of Service: WMM, Bandwidth Control
- WAN Type: Dynamic IP, Static IP, PPPoE, PPTP(Dual Access), L2TP(Dual Access), Bigpond
- Management: Access Control, Local Management, Remote Management
- DHCP: Server, DHCP Client List, Address Reservation
- Port Forwarding: Virtual Server, Port Triggering, UPnP, DMZ
- Dynamic DNS: DynDns, NO-IP, TP-Link
- VPN Server: PPTP, Open VPN
- Access Control: Parental Control, Local Management Control, Blacklist, Whitelist
- Firewall Security: DoS, SPI Firewall, IP and MAC Address Binding
- Protocols: IPv4, IPv6
- USB Sharing: Supports Samba(Storage), FTP Server, Media Server, Printer Server, Time Machine
- Guest Network: 2.4GHz guest network x 1, 5GHz guest network x 1

## Others

- Certification:  
FCC, RoHS
- System Requirements:  
Microsoft Windows 98SE/NT/2000/XP/Vista™/7/8/8.1/10, MAC OS, NetWare, UNIX or Linux  
Internet Explorer 11, Firefox 12.0, Chrome 20.0, Safari 4.0, or other Java-enabled browser  
Cable or DSL Modem  
Subscription with an internet service provider (for internet access)
- Environment:  
Operating Temperature: 0°C~40°C (32°F ~104°F)  
Storage Temperature: -40°C~70°C (-40°F ~158°F)  
Operating Humidity: 10%~90% non-condensing  
Storage Humidity: 5%~90% non-condensing
- Package Contents  
AC1900 High Power Wireless Dual Band Gigabit Router Archer C1900  
Power Adapter  
RJ45 Ethernet Cable  
Quick Installation Guide



For more information, please visit

<http://www.tp-link.com/us/products/details/Archer-C1900.html>

or scan the QR code left

Specifications are subject to change without notice. TP-Link is a registered trademark of TP-Link Technologies Co., Ltd. Other brands and product names are trademarks or registered trademarks of their respective holders. Copyright ©2017 TP-Link Technologies Co., Ltd. All rights reserved.  
TP-Link Technologies Co., Ltd.  
Building 24 (floors 1, 3, 4, 5) and 28 (floors 1-4) Central Science and Technology Park, Shennan Rd, Nanshan, Shenzhen, China  
[www.tp-link.com](http://www.tp-link.com)

[www.tp-link.com](http://www.tp-link.com)

TP-Link AC1900 High Power Wireless Dual Band Gigabit Router Archer C1900